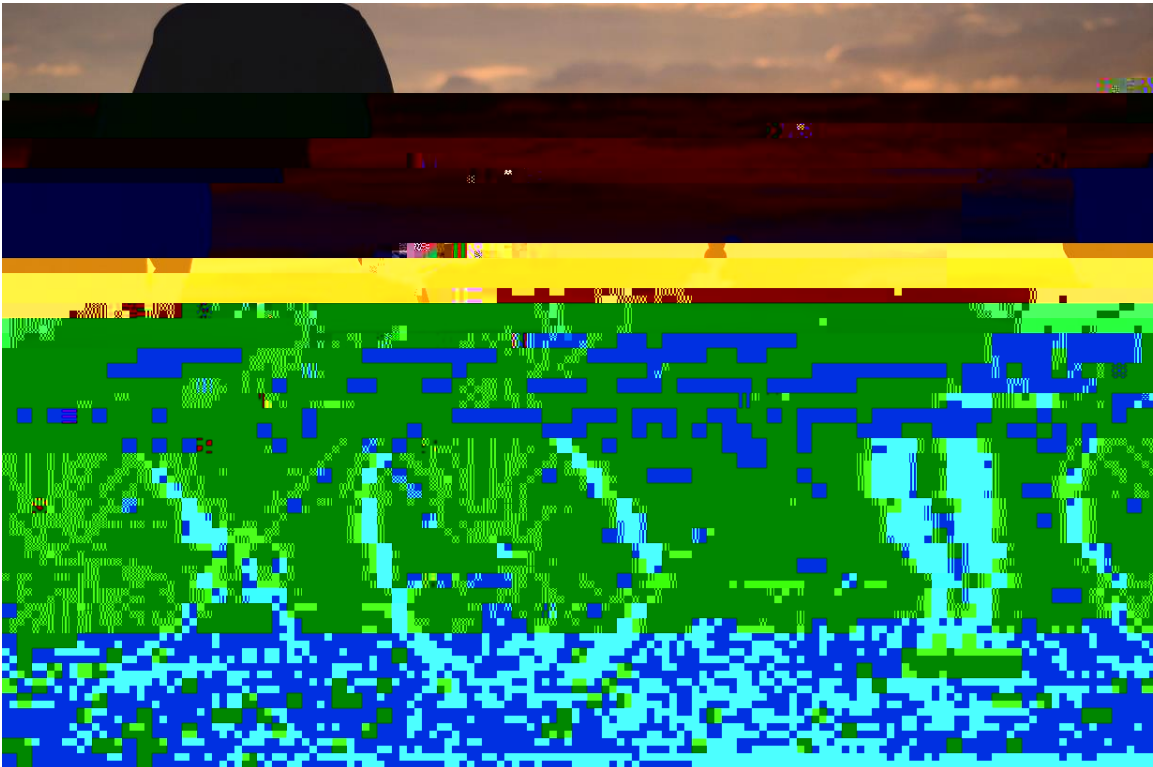




June 2017



Along the Foreshore	102	Along Place Road	11
On Chapman Road	85	To the airport	10
Sunset Beach to the CBD	79	Along Fitzgerald Street	10
To the light house	67	In Geraldton suburb	10
Along Marine Terrace	54	Along Horwood Road	10
To Back Beach/Mahomets flats	53	To Moonyoonooka	10
Throughout the CBD	53	Tarcoola Beach to the CBD	10
Along Beach Road to the M	10		

Shared paths only	23	From Cape Burney to CBD on Highway	5
In Drummond Cove/Glenfield Suburb	20	Along Cathedral Avenue	5
From Bluff Point to the CBD	20	Along Durlacher Street	5
Along the North West Coastal Highway	19	Along Flores Road	5
In Tarcoola Beach suburb	18	From Glendinning to Drummond Cove	5
In Beachlands Suburb	16	In Moresby Suburb	5
In Woorree suburb	16	In Mount Tarcoola to the CBD	5
In Waggrakine Suburb	15	In Wonthella to the CBD	5
Along Brand Highway	14	In Beresford suburb	4
Along Willcock Drive Road	14	In Mount Tarcoola suburb	4
In Strathalbyn suburb	13	Greenough to CBD on highway	4
In Wonthella suburb	12		

lack of paths to town

9

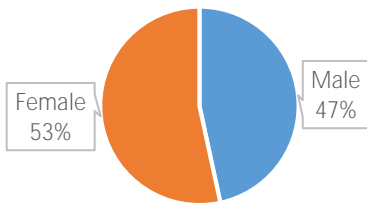
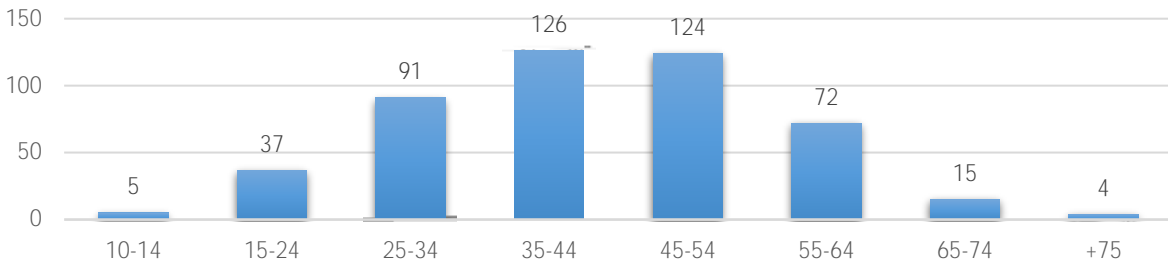
Bike lanes in Drummond Cove suburb

Bike lanes around Point Moore suburb	1
Build footpaths/cycle lanes from Wonthella to the beach	1
Walkaway township cycle paths	1
Install a foam pit at skate park	1
Build and indoor skate park	1
Build an inland bike path and connect to coastal path to make a loop	1
Build more facilities	1
Build more footpaths	1
Bike paths to all beaches	1
Build a cycle/footpath tunnel under the NWCH	1

Improve awareness of cyclists and motorist of laws to build respect and increase cyclist safety	37
Reduce speed limits on major roads	6
Promote bike riding	4
Provide bike hire on the Foreshore	3
Make wearing helmets optional	3
Support more bike events	2
Riders must wear high vis clothing and use lights during day	1
Fine cyclists doing the wrong thing	1
Make bells on bike mandatory	1
Public buses should transport bicycles	1
Free drop off and pick up points	1
Reduce speeds from 6am-10pm on weekends on certain roads (i.e. Rudds Gully)	1
Use coloured stripes on road to remind drivers of cycle lanes	1
Use curbing instead of white lines to mark cycle lanes	1

Better maintain paths/lanes, keep them clean and free of debris	12
Ensure path/lane surfaces are smooth	10
Improve footpaths so you can ride on them	7
Ensure verges are clean and clear of debris	5
Build wider bike paths	5
Build wider cycle lanes	4
Pave wider shoulders on the road	4
Cycle lanes across bridges	1
Improve pinch points	1
Ensure there are no drains in cycle lanes	1
Make paths safer for kids	1
Improve street/bike path lights	3
Improve highway lighting on path by Ackland Street crossing	1

Self-



West End	6
Walkaway	4
Park Falls	3
Moonyoonooka	2
Rudds Gully	2
Chapman Valley	1
Dongara	1
Greenough	0
Karloo	0
Meru	0
Mullewa	0
Narngulu	0
Webborton	0